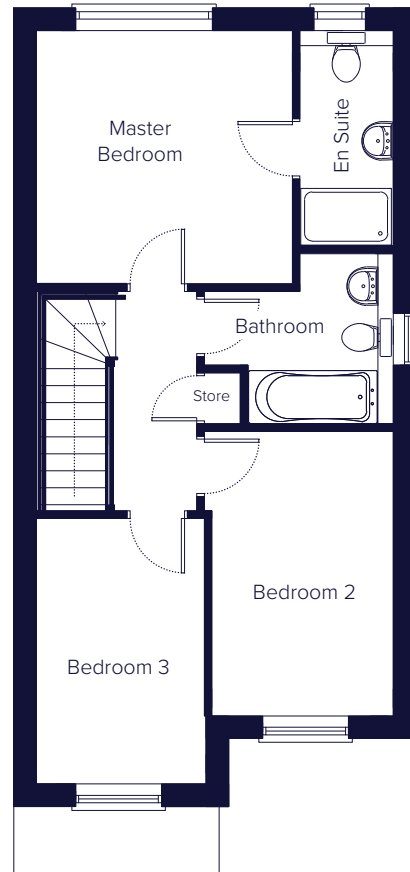
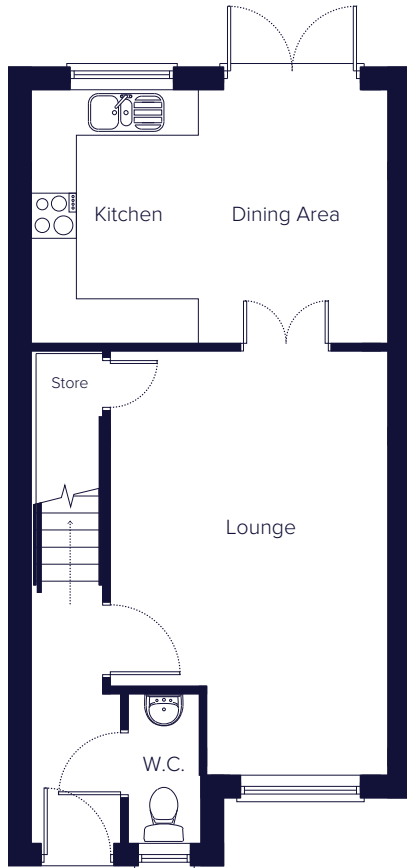


Fieldside

Plots 2, 4, 7 & 9

Three-bedroom semi-detached home



Ground Floor

Kitchen & Dining Area	4720mm x 3353mm
Lounge	3675mm x 5613mm

First Floor

Master Bedroom	3388mm x 3353mm
En Suite	1233mm x 2853mm
Bedroom Two	2398mm x 3763mm
Bedroom Three	2245mm x 3513mm
Bathroom	2498mm x 2250mm

These details are intended to give a general indication of the proposed development and floor layouts. The company reserves the right to alter any part of the development, specification and floor layouts at any time and without prior notice. The contents herein shall not form part of any contract or representation inducing any such contract.