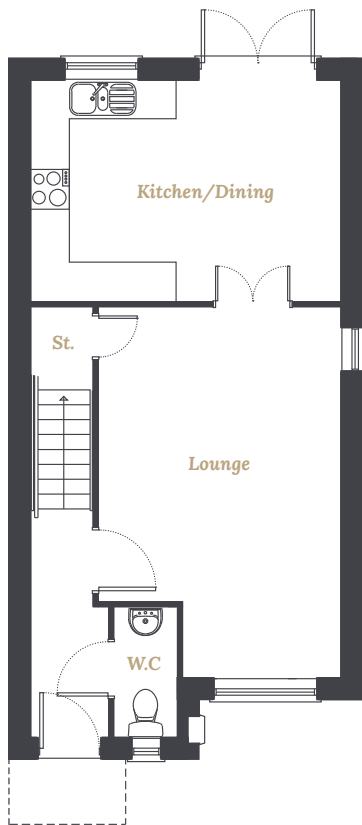


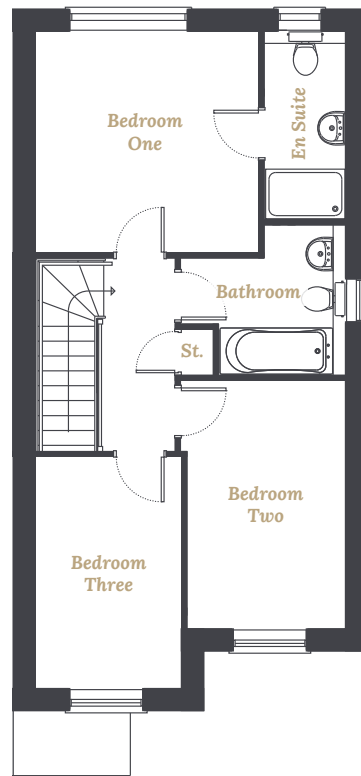


# PLOT 4

Three-bedroom semi-detached home



Ground Floor



First Floor

|                       |                        |
|-----------------------|------------------------|
| <i>Kitchen/Dining</i> | <i>4720mm x 3365mm</i> |
| <i>Lounge</i>         | <i>3687mm x 5625mm</i> |
| <i>W.C</i>            | <i>975mm x 1990mm</i>  |

|                      |                        |
|----------------------|------------------------|
| <i>Bedroom One</i>   | <i>3400mm x 3365mm</i> |
| <i>En Suite</i>      | <i>1245mm x 2865mm</i> |
| <i>Bedroom Two</i>   | <i>2410mm x 3775mm</i> |
| <i>Bedroom Three</i> | <i>2235mm x 3525mm</i> |
| <i>Bathroom</i>      | <i>2510mm x 2275mm</i> |

These details are intended to give a general indication of the proposed development and floor layouts. The company reserves the right to alter any part of the development, specification and floor layouts at any time and without prior notice. The contents herein shall not form part of any contract or representation inducing any such contract.