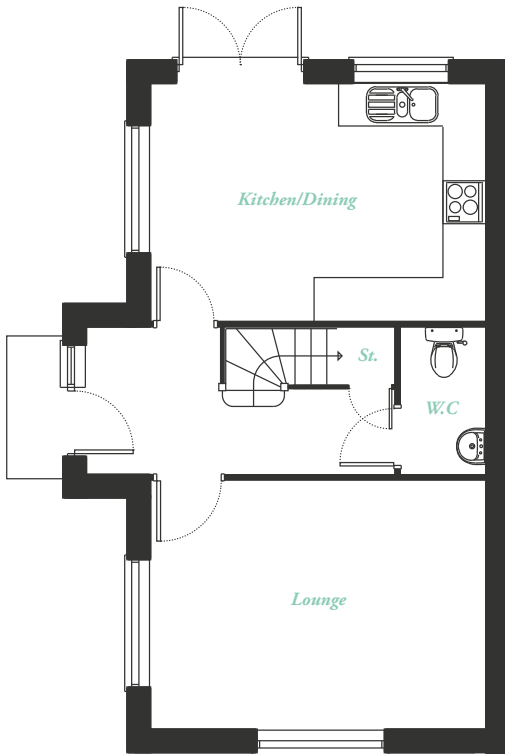


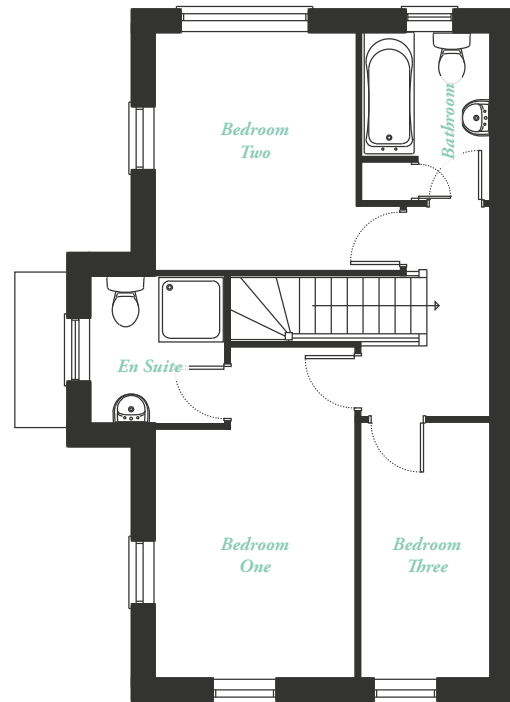


PLOT 1

Three-bedroom semi-detached home



Ground Floor



First Floor

KITCHEN/DINING	4720mm x 3345mm
LOUNGE	4720mm x 3500mm
W.C	1213mm x 2070mm

BEDROOM ONE	2817mm x 4650mm
EN SUITE	1893mm x 2090mm
BEDROOM TWO	2833mm x 3345mm
BEDROOM THREE	1828mm x 3598mm
BATHROOM	1812mm x 2370mm

These details are intended to give a general indication of the proposed development and floor layouts. The company reserves the right to alter any part of the development, specification and floor layouts at any time and without prior notice. The contents herein shall not form part of any contract or representation inducing any such contract.