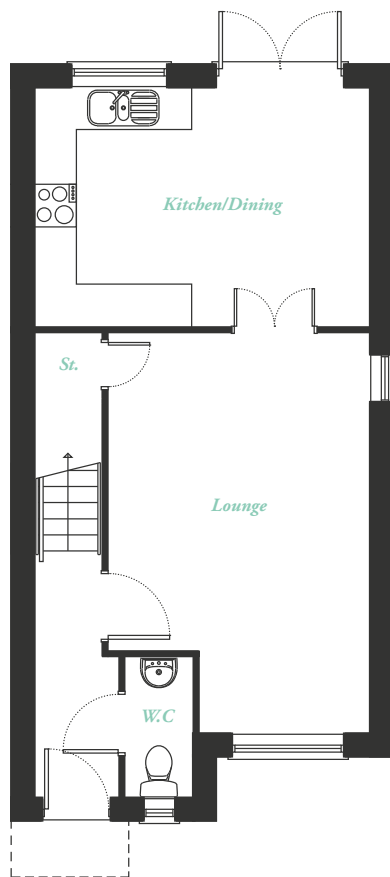


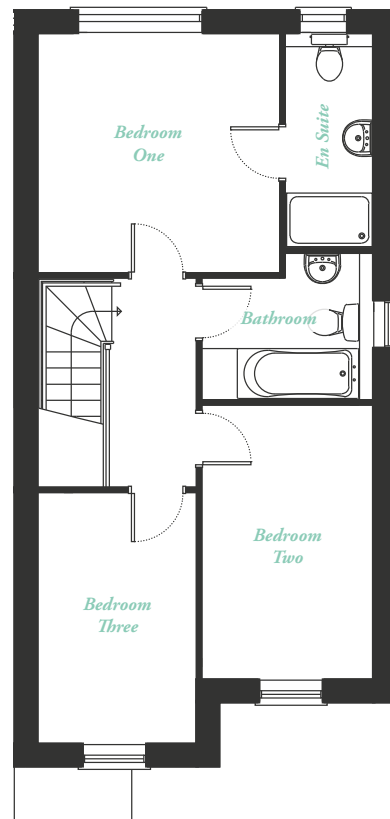


PLOT 5,7&9

Three-bedroom semi-detached home



Ground Floor



First Floor

KITCHEN/DINING	4720mm x 3365mm
LOUNGE	3687mm x 5625mm
W.C	965mm x 1990mm

BEDROOM ONE	3400mm x 3365mm
EN SUITE	1245mm x 3015mm
BEDROOM TWO	2410mm x 3850mm
BEDROOM THREE	2245mm x 3525mm
BATHROOM	2410mm x 2050mm

These details are intended to give a general indication of the proposed development and floor layouts. The company reserves the right to alter any part of the development, specification and floor layouts at any time and without prior notice. The contents herein shall not form part of any contract or representation inducing any such contract.